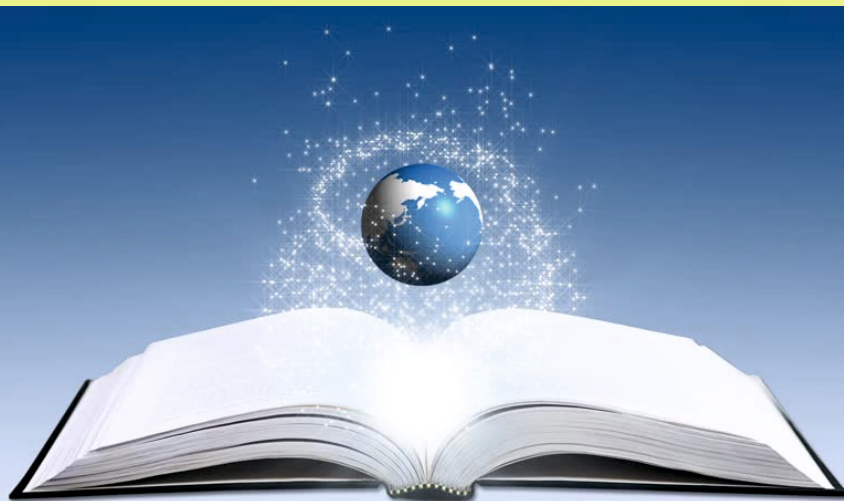




EAST WEST INSTITUTE OF TECHNOLOGY

Affiliated to VTU Belagavi, Approved by AICTE, New Delhi, Recognized by Govt. of Karnataka, Accredited by NAAC, Recognized under the UGC Act 1956 Section 2(f) & 12(b), New Delhi

LIBRARY & INFORMATION CENTRE



**No.63, Near BEL Layout, Off Magadi Road,
Vishwaneedham Post, Anjananagar, Bengaluru-560091.**



Late Shri. C M Nagaraj
Founder - EWGI
Former Mayor - BMP



EAST WEST INSTITUTE OF TECHNOLOGY



Late Shri. C N Ravi Kiran
Former Chairman
EWGI



Smt. Rashmi Ravikiran
Chairperson, EWGI



Sri. Tejas Kiran C R
Secretary, EWGI



Dr. T N Nagabhushana
Executive Director, EWGI



Dr. Purushotham B
Director-Admissions, EWGI



Dr. K Channakeshavalu
Principal / Director
East West Institute of Technology





1968
**EAST WEST
INSTITUTE OF TECHNOLOGY**

**LIBRARY &
INFORMATION CENTRE**

ABOUT LIBRARY

EWIT Library was established in the year 2001. It has a comprehensive collection of print and online resources that support the academic, professional, and research activities of EWIT. The Central Library is located in the Main block and PG Library is in the CMM block and occupies an area of about 617 Sq.mt with a seating capacity for 200 users at a time. The library is well known for its collections of books, Journals, e-Journals, e-books, NPTEL Videos, Swayam, NDLI (National Digital Library of India), and VTU Question Papers.

Library Automation: Library has been fully automated using Licensed Library Management Software Package “Libsoft” Version 10.0.0 in the year 2009, later it was upgraded to 12.0.0 version in the year 2022. The software is used for Acquisition, Cataloguing, Member Registration, Transaction, Documentation, Barcode, Statistics and WEB OPAC. The Library resources have been completely bar coded, all the transactions are being carried out through the barcode interface facilities.

WEB-OPAC: Users can access Web-OPAC to search library collections like Books, Journals, Magazines, Seminar Reports, Project Report and Question Papers can be accessed. URL to access Web-OPAC is 124.40.247.66:9087/OPAC.

E-Resources: Library has subscribed e-resources through VTU consortium. VTU Consortium acts as a single-window service for Technical Institutions with their diverse research and academic interests. The EWIT library is an active member of VTU consortium and has an access to the online e-resources like Elsevier, IEEE (ASPP), Science Direct, Springer Nature, Taylor and Francis, Emerald Management, New Age International, Mint Books, Drillbit (Plagiarism Software), and Knimbus Access remote tool (<http://ewitb.knimbus.com>). The VTU Consortium provides access to 6883+ e-Journals and 23471+ e-Books.

Remote access system for e-Resources on Knimbus Access: Library has subscribed Knimbus Access through VTU consortium. It connects users and e-content anywhere and anytime on any device in a secured environment. All the e-resources have been integrated in the online portal includes Science Direct, IEEE (ASPP), Springer Nature, Taylor and Francis, Elsevier Science Direct, Emerald Management, Pro-Quest, New Age International, Packt Books and open source e-resources can be accessed at <http://ewitb.knimbus.com>. Users are provided with User Name and Password to access it.

LIBRARY VISION & MISSION



VISION

“To provide continuous access to resource and information services necessary to support teaching, learning and research needs of the Institution”



MISSION

“To develop a comprehensive collection of information to support Teaching, learning and Research needs of the staff, students and research scholars of the Institute”

LIBRARY INFRASTRUCTURE

Total Area	617 Sq.mt
UG	485 Sq.mt
PG	132 Sq.mt

Total Seating Capacity	200
UG	150
PG	50

Computers 24

Printer 02

Reprography 01

Barcode Printer 01

Library Management Software: Libsoft 12.0.0

LIBRARY TIMINGS:

Monday to Saturday: 8.30 AM to 5.30 PM

Circulation Timings: 8.30 AM to 4.30 PM

LIBRARY RESOURCES

Books	<ul style="list-style-type: none"> • No. of Titles 11245 • No. of Volumes 42817 • Reference Books 5967
Journals and Technical Magazines	4
E-Journals (VTU Consortium)	6883+ (IEEE-ASPP, Science Direct, Springer nature ,Taylor & Francis, Pro-Quest, Emerald)
E-Books (VTU Consortium)	23471+(Elsevier, New Age International, Packt e-books, Taylor & Francis, Springer Nature)
Technical Tools (VTU Consortium)	<ul style="list-style-type: none"> • Knimbus (Remote access tool) • Drillbit (Plagiarism checking tool)
Journals Back Volumes	177
Project Reports	2592
Seminar Reports	727
Magazines	10
News Papers	8
CD's/DVD's	1435

BOOKS DETAIL

UNDER GRADUATE

COURSE	TITLES	VOLUMES
ECE	1483	6663
CSE	1473	6143
AI&ML	3	48
CSE (IOT)	2	81
ISE	778	4968
AI&AD	5	18
ME	1714	6274
CV	930	3589
EEE	359	1566
Basic Science	647	3347
General Books	330	486
TOTAL	7796	33183

POST GRADUATE

COURSE	TITLES	VOLUMES
M.Tech	735	1988
MCA	763	2610
MBA	2021	5036
TOTAL	3519	9634

LIBRARY SERVICES

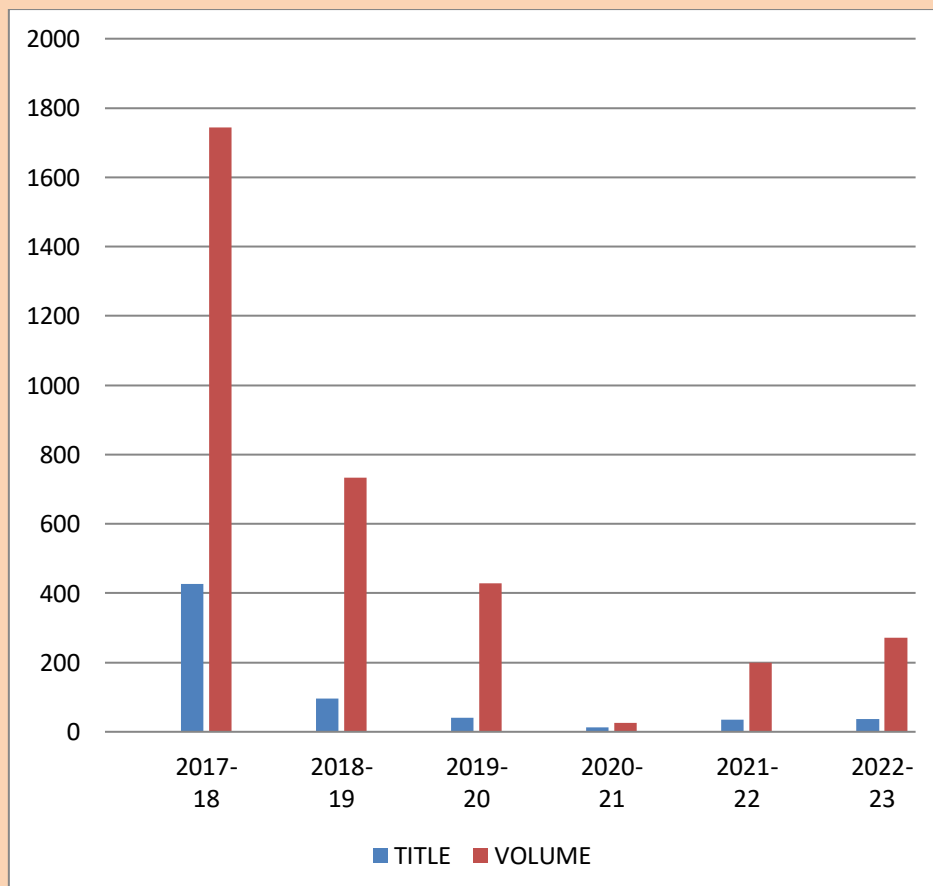
• Computerized Circulation
• Reference Service
• OPAC (Online Public Access Catalogue)
• Overnight Book Circulation
• SC/ST Book Bank Scheme
• New arrivals
• Reprographic Service
• News Paper Clippings
• NPTEL Videos
• VTU Question Papers
• Plagiarism checking
• Remote access service
• E-Journals Access
• Internet facility

VTU Consortium: E-Resources Subscription Details 2023-24

Publishers	URL	No. of e-Journals and e-Books
Elsevier	www.sciencedirect.com	298 E-Journals
Springer Nature	https://link.springer.com/	690 e-Journals
IEEE-ASPP	https://ieeexplore.ieee.org	198 E-Journals
Taylor & Francis	https://www.tandfonline.com/	585 e-Journals
Emerald	https://www.emeraldinsight.com/	212 e-Journals
Pro-Quest	https://www.proquest.com/	4900 e-Journals
Elsevier	www.sciencedirect.com	436 E-Books (Perpetual Access)
New Age International	http://www.newagepublishers.com/servlet/nahome	220 E Books (Perpetual Access)
Packt	https://prod.packtpub.com/in/	5002 E-Books (Perpetual Access)
Taylor & Francis	https://www.tandfonline.com/	4950 E-Books
Springer Nature	https://link.springer.com/	12863 E Books
KNIMBUS https://www.knimbus.com/	Cloud server along with universal federation search services remote access solutions + mLibrary mobile app	1,00,000+ e-books & proceedings, e-journals 15000+, videos 1,50,000+, Mooc courses including NPTEL and
Drillbit www.drillbitplagiarismcheck.com	Drillbit Plagiarism Detection Software	-----

YEARWISE BOOK COLLECTION

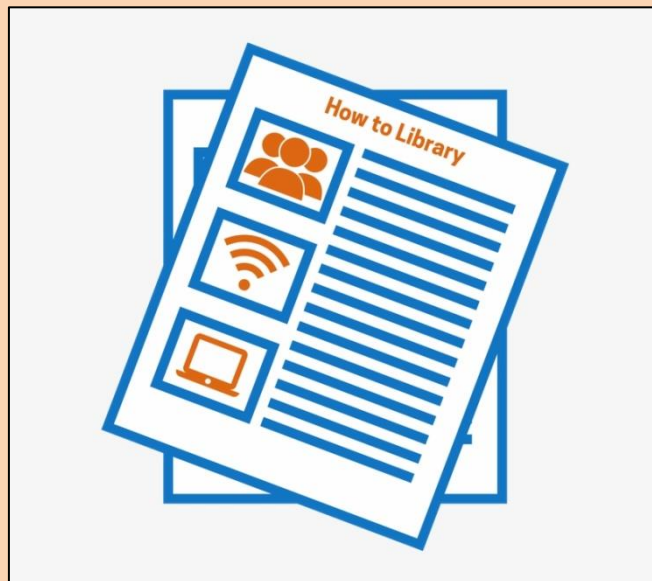
YEAR	TITLE	VOLUME
2017-18	427	1743
2018-19	96	734
2019-20	41	429
2020-21	13	26
2021-22	35	199
2022-23	36	271



LIBRARY POLICY

Circulation Procedure:

- All students, faculty and employees of the Institute are entitled for the membership of the library. Library membership form is available at the Membership Counter at Central Library.
- Three Books will be issued for UG & PG students for duration of 14 days
- For Faculty members six books will be issued for one semester
- Book can be renewed for further one term, if the book is not being reserved by any one



LIBRARY RULES

- The rack at the entrance is to be used to keep your Personal Belongings
- Identity card should be shown at the checkpoint to enter the library
- Users has to sign in the register in the entrance before entering and leaving in to the library
- Borrower cards are not transferable. The borrower is responsible for the books borrowed on his/her card.
- The borrower should check the physical status of a book while receiving from the issue counter
- No book in damaged condition will be accepted from the borrowers on return. Damaged books will have to be replaced by the borrower.
- In case of loss of books by the borrower, the borrower must replace the book with latest edition along with overdue charges. Otherwise, the borrower will have to pay twice the market price of the book
- The librarian may recall any book from any borrower at any time and the borrower shall return the same immediately
- Misbehavior in the library will lead to cancellation of membership and also lead to serious disciplinary action
- Use of Mobile phones is not permitted and silence should be maintained inside the Library
- Keep the library clean

DIGITAL LIBRARY RULES

- Electronic resources such as e-journals, e-databases etc made available by the Central Library are for academic use only.
- Downloading or printing of a complete book or an entire issue or a volume of one or more journals (called systematic downloading) is strictly prohibited.
- Use of robots, spiders or intelligent agents to access, search and/or systematically download from these resources is also prohibited.
- Any violation of this policy will result in penal action as per the rules and regulations of the Institute. Please be aware that systematic downloading will cause the publisher to block to the entire community of users @ EWIT from accessing these resources.

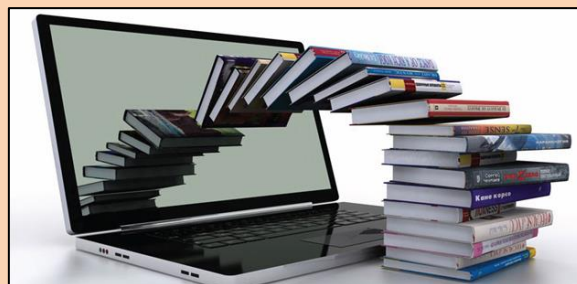
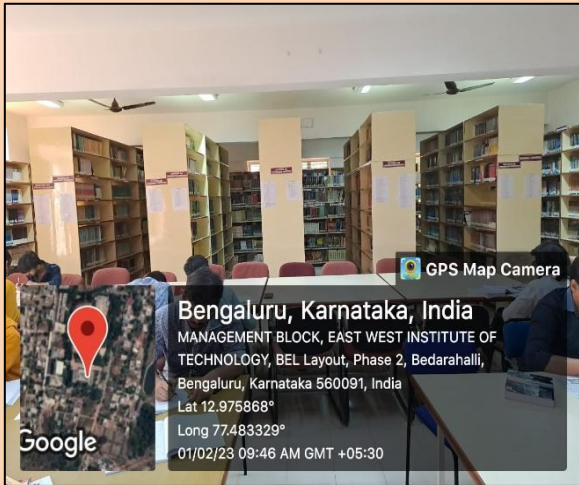
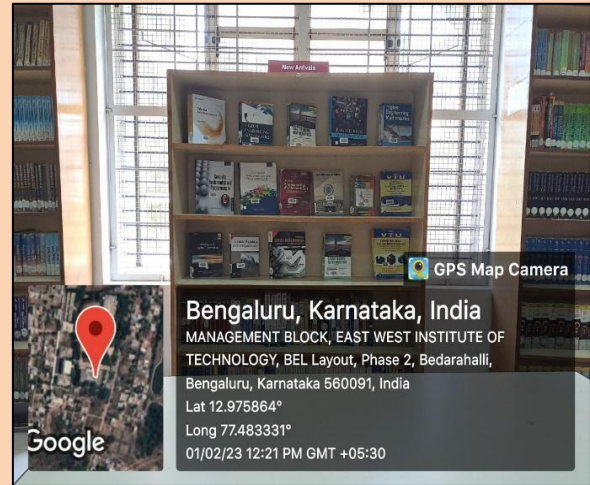


PHOTO GALLERY



STOCK SECTION

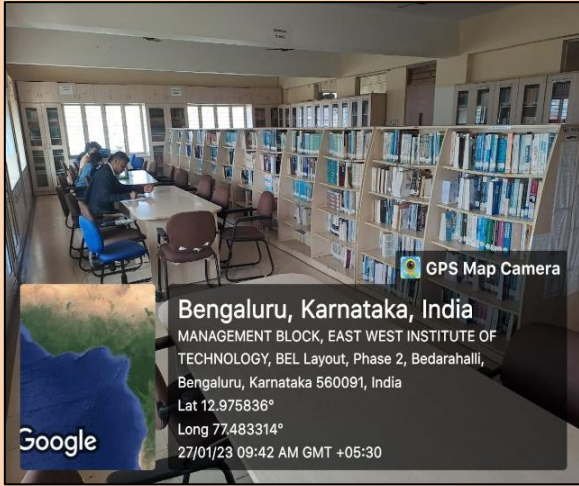


NEW ARRIVALS



CIRCULATION COUNTER





PG LIBRARY



REFERENCE SECTION



LIBRARY ORIENTATION



EAST WEST INSTITUTE OF TECHNOLOGY

LIBRARY & INFORMATION CENTRE



Vision

To be an Institute of Academic Excellence in Technical and Management Education on par with global standards to meet changing needs of the Society.

Mission

- ⇒ To impart high quality technical education that nurtures the spirit of inquiry.
- ⇒ To foster technological innovation.
- ⇒ To give fill up to all round personality development.
- ⇒ To implant ethical and social commitment that grooms the students to become responsible citizens.

Quality Policy

- ⇒ To inculcate the values of DISCIPLINE, DEDICATION, DETERMINATION and DIVERSITY and inspire the young students to imbibe them scrupulously.
- ⇒ To standardize and document every activity as per stipulated quality policy.
- ⇒ To pave way for sustainable knowledge based education to replace the ubiquitous examination oriented education.
- ⇒ To develop compassion to fellow citizens.

Objectives

- ⇒ To enhance capacity development in the Institution.
- ⇒ Attaining excellence in teaching - facilities and methodologies.
- ⇒ Improving competency of Staff & students.
- ⇒ Enhancing Institution Industry Collaboration.
- ⇒ Strengthening Academic reforms in the Institution.
- ⇒ To nurture the holistic development of students community.
- ⇒ To impart quality oriented teaching pedagogies in enriching young minds.